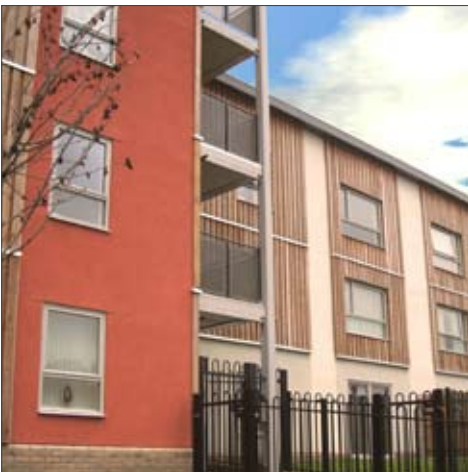


Structherm | Fastbuild[®]
Swarcliffe Estate
Leeds

Client: Yorkshire Housing & Wates
Sector: Social Housing



Building type:
Five blocks of apartments

Project size:
5474m²

Package Supplied:
Fastbuild walls plus Hanson
200mm Hollowcore floors, solid
planks & stairs

Build time:
30 weeks (total)

Background:

The Swarcliffe Estate project involved the demolition of existing poor quality housing to make way for 148 new houses and apartments, to provide local people with high quality homes at low cost rents.

Five brownfield sites were developed on the estate in an initiative by Leeds City Council and the Yorkshire Housing Group, with Structerm providing the concrete superstructure, which included Fastbuild walls and Hanson 200mm Hollowcore floors, solid planks and stairs. The homes replaced outdated housing which was demolished to make way for the new high quality accommodation. Most of the homes are available at social rents but some will be offered for sale as part of a shared ownership scheme designed to enable people to get on the housing ladder.

Hanson Products Used:

- 200mm Hollowcore Floors
- Solid Planks
- Stairs

Testimonial:

Jimm Reed, Development Project Manager for Yorkshire Housing said:

"The homes are built to a high quality standard, utilising off-site manufacture in line with our policy to develop modern, innovative properties. They are designed to high energy efficiency standards which will help transform standards of living for our customers who will become part of a new, sustainable community in Swarcliffe."



Left: Site in progress

Below: Nearing



For further information on this or other Structerm Fastbuild® projects please contact us on **0800 040 7460** or visit: **www.structured.co.uk**