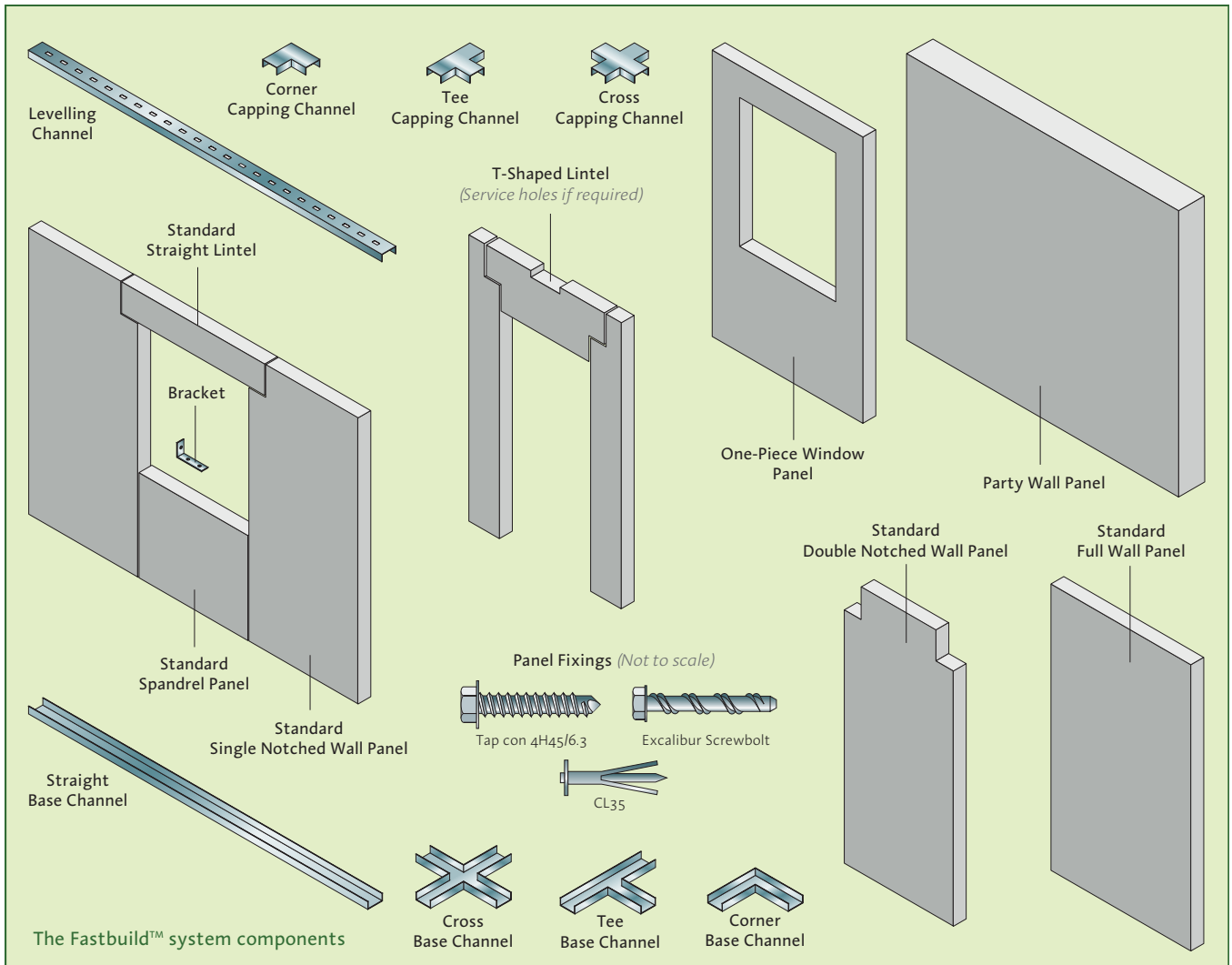
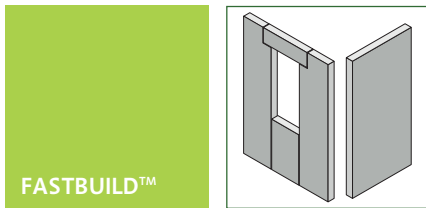


Uniclass	G25:JB1		
CI/SfB	(21)	(22)	

COMPONENTS & FIXINGS



The Fastbuild™ system consists of a very wide range of components and fixings that offers complete design flexibility for those engaged in the construction process. The system's flexibility is facilitated by using both standard and bespoke panel formats in a variety of incremental heights, widths, and three thicknesses.



Fastbuild™ Formats

The Fastbuild™ panels can be manufactured in several formats as listed below. The format selected for each building will depend on the layout and application.

Fastbuild™ standard panel format

This format consists of a separate lintel, spandrel and notched side panels to support the lintel to form each of the door/window openings. Rectangular panels are then used to form the straight sections of walling between the openings. The maximum panel width is 1250mm. See Tables 1A and 1B.

The lintels and spandrel units are designed bespoke to suit the window/door head height levels and the window cill levels. The lintel and bearing detail is always consistent and as such the notched side panels are the same regardless of the depth of lintel being supported.

The panels are delivered on pallets and as such can be used for tighter sites. The pallets are then offloaded and transported to the storage area.

This format is usually used for buildings such as schools or doctors' surgeries where there is very little repetition in the design. The door/window openings are spaced at uneven intervals and opening sizes vary.

The other advantage of this format is that curved sections can be created by using narrow panels in a faceted layout.

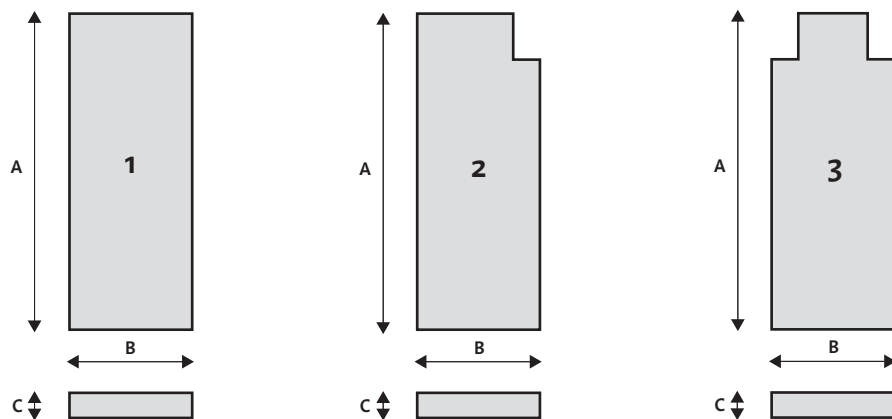
TABLE 1A - FASTBUILD™ STANDARD PANEL HEIGHTS AND THICKNESSES

Panel Reference	Panel Height (A) (mm)	Panel Thickness (C) (mm)			Structural Design		
		100	125	200	Structherm Test Data	British Standard	BBA Approval
G	2400	3	3	3	3	-	3
H	2500	3	3	3	3	-	3
A	2550	3	3	3	3	-	3
B	2625	3	3	3	3	-	3
C	2700	3	3	3	3	-	3
D	2775	3	3	3	3	-	3
V	2800	3	3	3	3	-	3
K	2850	3	3	3	3	-	3
E	2925	3	3	3	3	-	3
W	2950	3	3	3	3	-	3
F	3000	3	3	3	3	-	3
J	3075	-	3	3	-	3	-
M	3100	-	3	3	-	3	-
P	3150	-	3	3	-	3	-
N	3200	-	3	3	-	3	-
X	3250	-	3	3	-	3	-
R	3450	-	3	3	-	3	-
T	3500	-	3	3	-	3	-
Q	3700	-	3	3	-	3	-

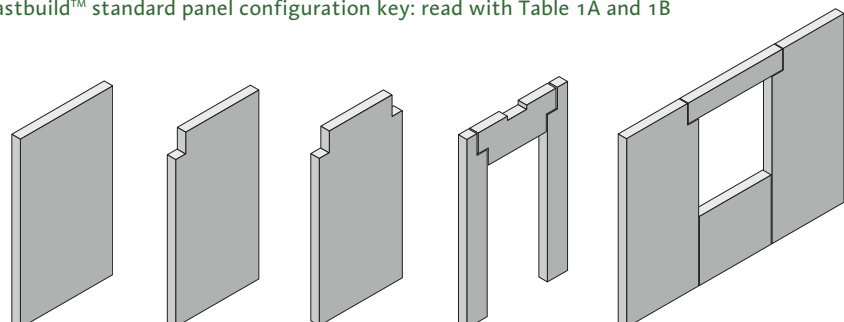
Structherm can produce panels up to 4000mm at 125mm and 200mm thicknesses designed to British Standards.

TABLE 1B - FASTBUILD™ STANDARD PANEL WIDTHS

Panel Design	Panel Description	Widths (B) (mm)
1	Full Panel	350 – 1250 (increments of 25mm)
2	Single Notched Panel	350 – 1250 (increments of 25mm)
3	Double Notched Panel	450 – 1250 (increments of 25mm)



Fastbuild™ standard panel configuration key: read with Table 1A and 1B



Structherm's experienced CAD and Technical team can support flexible solutions with Fastbuild™, providing bespoke designs where required.

Fastbuild™ window panel format & Fastbuild™ party wall panel format

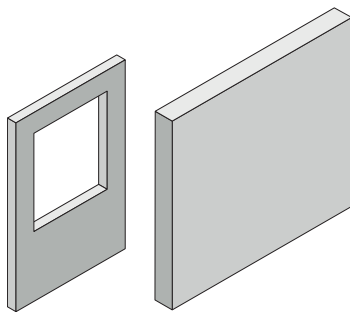
The window panel format is where larger panels up to 3.6m wide with are provided with pre-formed window openings. These panels are supplied to site in the upright position and craned directly off the wagon and erected using the steel base channels as guides. The window panel will only be specified where there is a high degree of repetition with the window size. This makes this option ideally suited to projects such as apartments, hotels, key worker accommodation blocks and secure accommodation. See Table 2.

The party wall format is normally specified as 200mm thick in order to achieve the desired level of acoustic attenuation. In order to limit the number of joints between the panels, the party walls can be manufactured in longer widths up to 3.7m. See Tables 3A and 3B.

The window and party wall panels can also be designed as protected elements to satisfy progressive collapse criteria as they can resist explosion loads.

In addition, these panel formats can be combined with the standard format previously outlined.

These panel formats offer benefits in terms of speed, but however, they can only be used where good access is available.

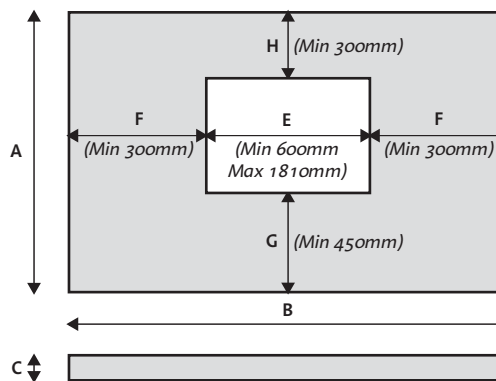


Structherm's experienced CAD and Technical team can support flexible solutions with Fastbuild™, providing bespoke designs where required.

TABLE 2 - FASTBUILD™ WINDOW PANEL HEIGHTS AND THICKNESSES

Panel Reference	Panel Height (A) (mm)	Panel Thickness (C) (mm)			Structural Design		
		100	125	200	Structherm Test Data	British Standard	BBA Approval
A	2550	3	3	–	3	3	–
C	2700	3	3	–	3	3	–
V	2800	3	3	–	3	3	–
W	2950	3	3	–	3	3	–
F	3000	3	3	–	3	3	–
X	3250	–	3	–	–	3	–
T	3500	–	3	–	–	3	–

Window panel widths (B) vary with window width and pier width. See diagram.



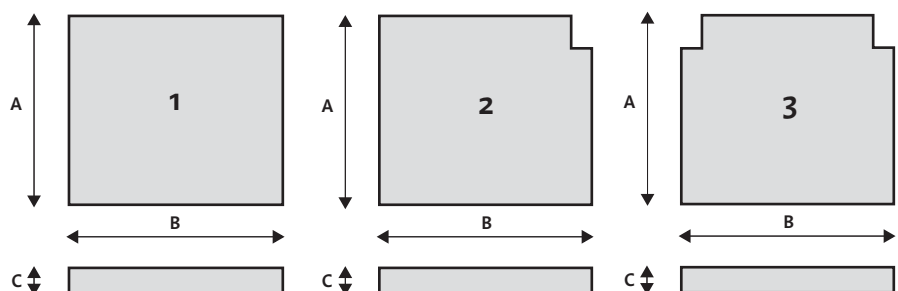
Fastbuild™ window panel configuration key: read with Table 2

TABLE 3A - FASTBUILD™ PARTY WALL PANEL HEIGHTS AND THICKNESSES

Panel Reference	Panel Height (A) (mm)	Panel Thickness (C) (mm)			Structural Design		
		100	125	200	Structherm Test Data	British Standard	BBA Approval
A	2550	–	–	3	3	–	3
C	2700	–	–	3	3	–	3
V	2800	–	–	3	3	–	3
W	2950	–	–	3	3	–	3
F	3000	–	–	3	3	–	3
X	3250	–	–	3	–	3	–
T	3500	–	–	3	–	3	–

TABLE 3B - FASTBUILD™ PARTY WALL PANEL WIDTHS

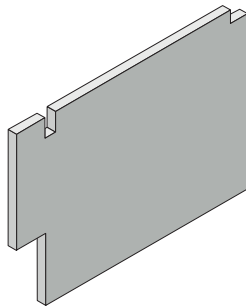
Panel Design	Panel Description	Widths (B) (mm)
1	Full Panel	2500 – 3700
2	Single Notched Panel	2500 – 3700
3	Double Notched Panel	2500 – 3700



Fastbuild™ party wall panel configuration key: read with Table 3A and 3B

Fastbuild™ wide panel format

Where appropriate, wider panels can be manufactured on a bespoke basis. These panels require heavier craneage and better access. As such, this format will only be specified where the project will benefit. These panels can be designed in single storey applications to act as deep beams reducing the amount of foundations required and provides a good option in secure accommodation between rooms.



Structherm's experienced CAD and Technical team can support flexible solutions with Fastbuild™, providing bespoke designs where required.

TABLE 4A - FASTBUILD™ WIDE PANEL HEIGHTS AND THICKNESSES

Panel Reference	Panel Height (mm)	Panel Thickness (mm)			Structural Design		
		100	125	200	Structherm Test Data	British Standard	BBA Approval
Bespoke solutions	2550	–	3	3	–	3	–
Bespoke solutions	2700	–	3	3	–	3	–
Bespoke solutions	2800	–	3	3	–	3	–
Bespoke solutions	2950	–	3	3	–	3	–
Bespoke solutions	3000	–	3	3	–	3	–
Bespoke solutions	3250	–	3	3	–	3	–
Bespoke solutions	3500	–	3	3	–	3	–

TABLE 4B - FASTBUILD™ WIDE PANEL WIDTHS

Panel Description	Width (mm)
Bespoke design	3700 – 5500 (increments of 25mm)



Claddings and Finishes

The addition of a variety of cladding systems and finishes may be used to create the aesthetics required.

These include:

1. Structherm external wall insulation used over the basic Fastbuild™ shell, and rendered with a Structherm BBA-approved quality finish.
2. An external brick skin tied back to the basic Fastbuild™ panels, and with a fully insulated cavity.
3. Proprietary dry cladding systems i.e. rainscreen cladding, cedar boarding and terracotta tiles.
4. Stone cladding tied back to the basic Fastbuild™ panels, and with a fully insulated cavity.