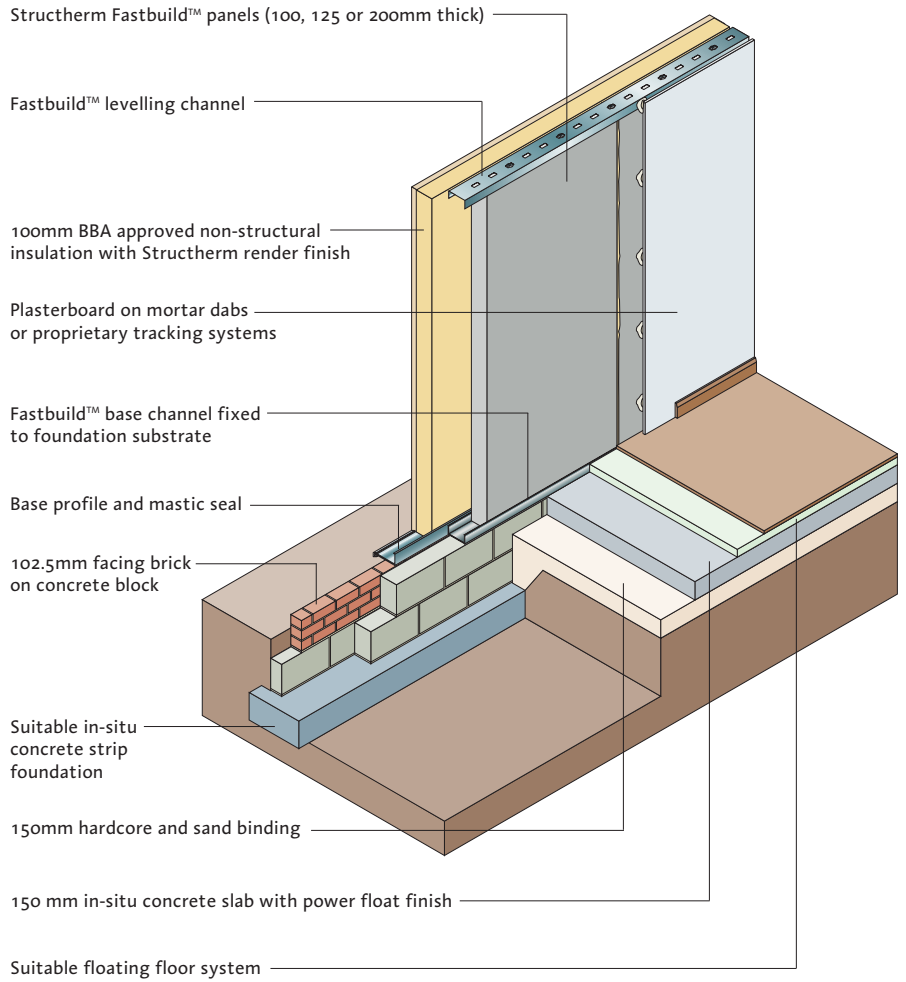
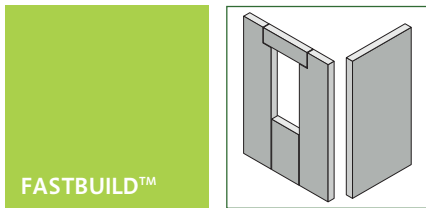


Uniclass	G25:JB1
CI/SfB	(21) (22)

APPLICATION DETAILS

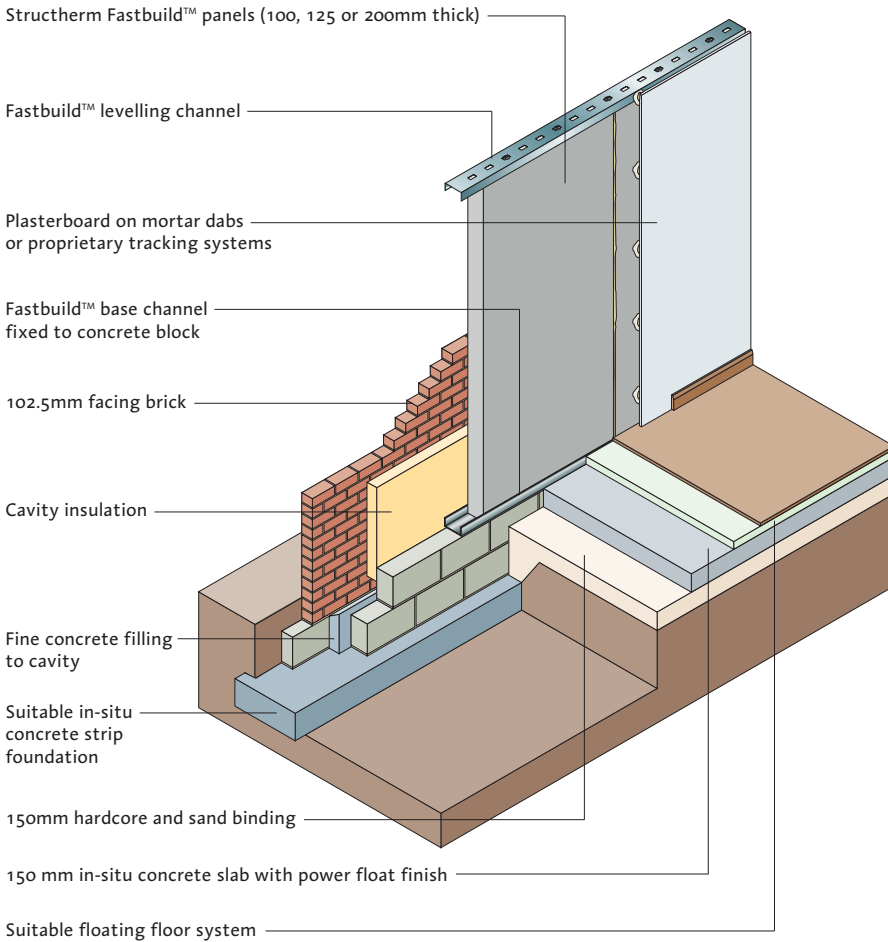


The Fastbuild prefabricated concrete building system is used across a wide range of building sectors including new-build and refurbishment. The details on this datasheet illustrate just a few of the possibilities available to a designer using the Fastbuild™ method.

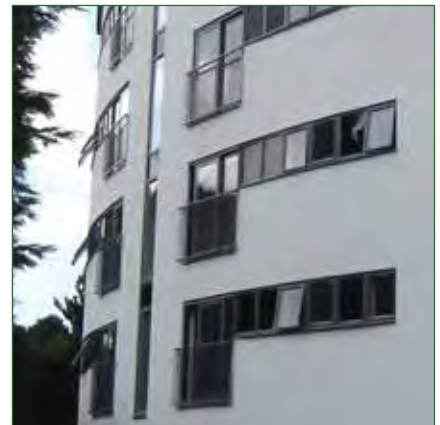
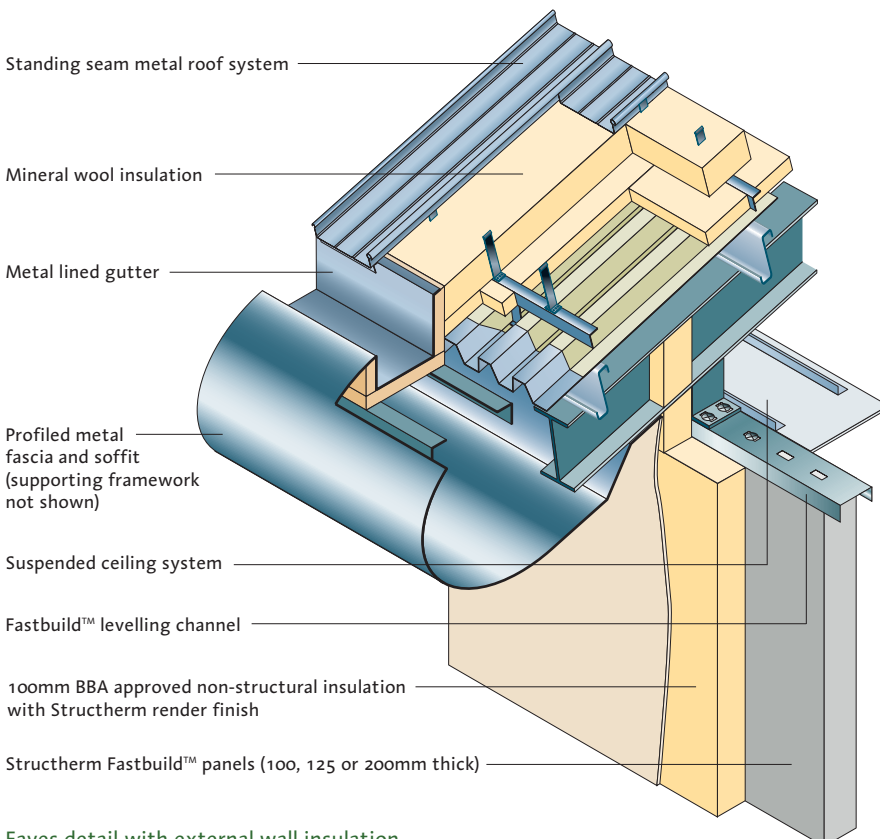


External wall insulation and render base detail

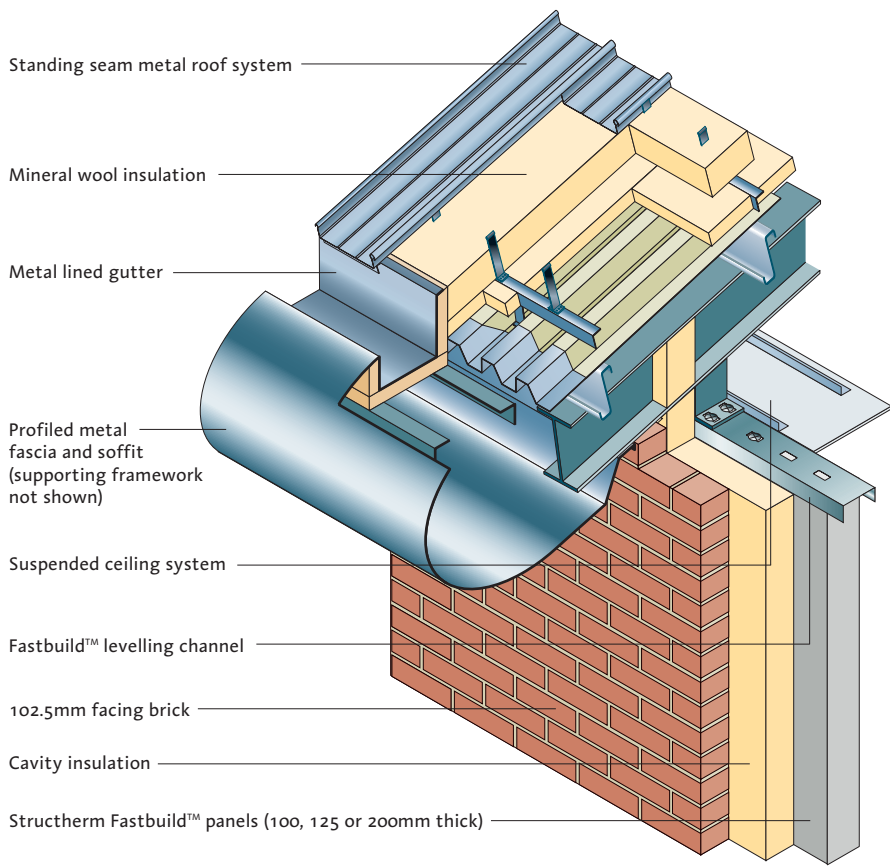




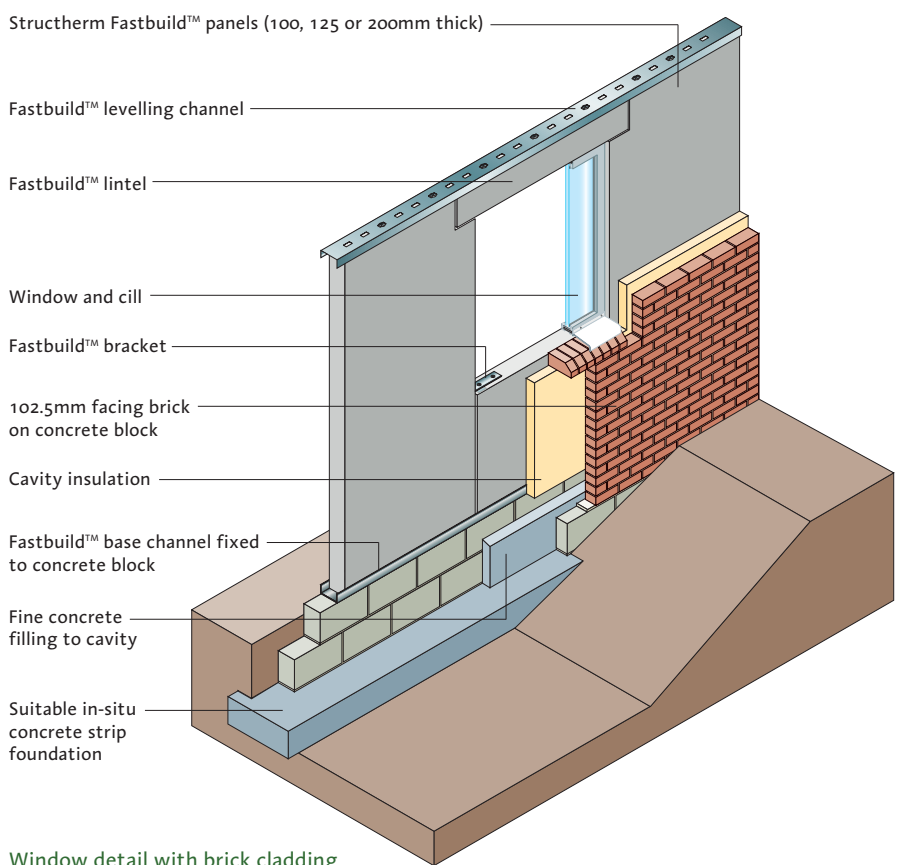
Facing brick with cavity fill base detail



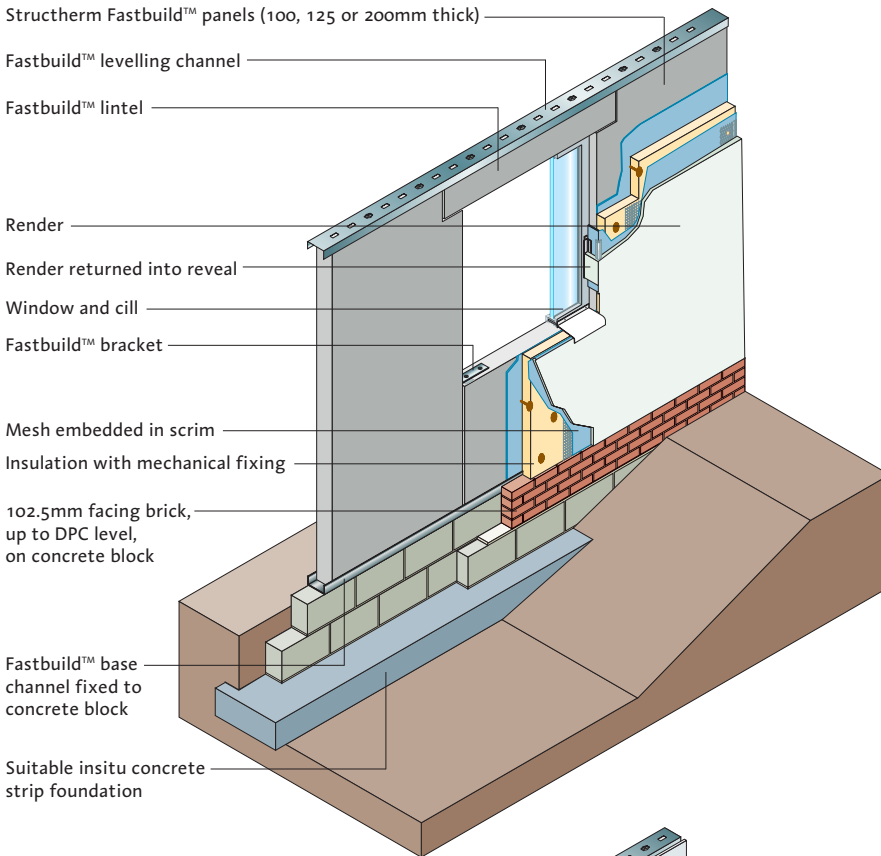
Eaves detail with external wall insulation



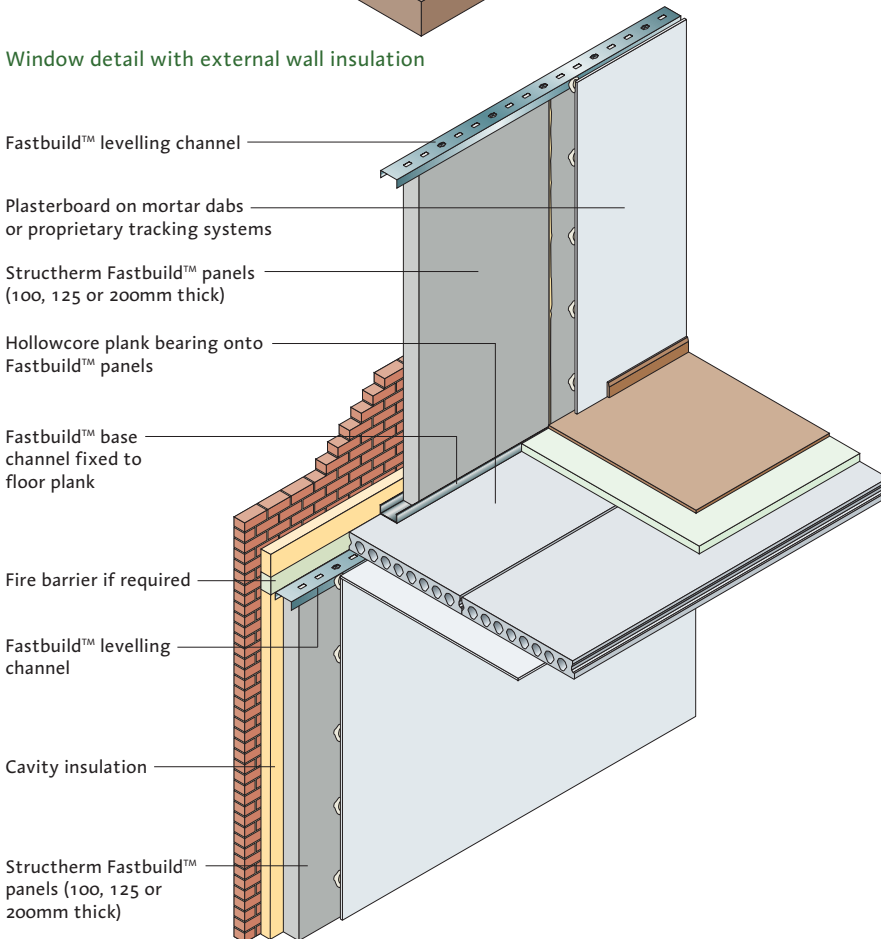
Eaves detail with facing brick



Window detail with brick cladding



Window detail with external wall insulation



Precast concrete hollowcore plank detail



Fixing of appliances

All fixings have been independently and rigorously tested. Provided a minimum embedment of 25mm is achieved, the following pullout capacities can be adopted.

Light (e.g. mirrors, pictures)

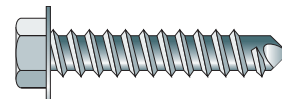
Standard plug and screw fixing into the panel provides a 0.5 kN allowable tensile pullout load i.e. a group of four fixings would clearly support items such as a washbasin or a handrail.

Medium (e.g. radiators)

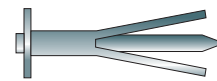
A hammer hit fixing into a solid panel provides a 1 kN allowable tensile pullout load.

Heavy (e.g. heating units, water heaters)

A 6mm screw fixing into a solid panel provides a 6.0 kN allowable tensile pullout load that would be appropriate to support M&E plant work.



Tap con 4H45/6.3



CL35

