

Uniclass	G251:JB1:L6815		
CI/SfB	(21.9)	Jn7	(M2)

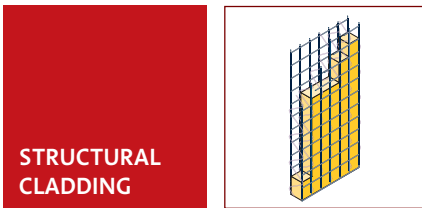
Structherm | Structural Cladding

APPLICATION DETAILS

LOW & HIGH RISE HOUSING REFURBISHMENT, EDUCATION, COMMERCIAL



The Structherm Structural Cladding System is used across a range of building sectors, providing each type with the benefits of fully integrated solutions for insulated, finely finished, continuous structures. The details on this datasheet illustrate just a few of the possibilities available to a designer whether using standard single panel, double panel or strip-rendered single panel applications, or any combination of these.



Luton Leisure Centre, Bedfordshire

Standard Single Panel Application

New-Build Project

The detail is based on the Luton Leisure Centre in Bedfordshire.

Key features include:

1. Steel frame supporting structure.
2. Creating a curved facade – convex or concave.

Cut across wires at centres of panels if required. Warren trusses must not be cut

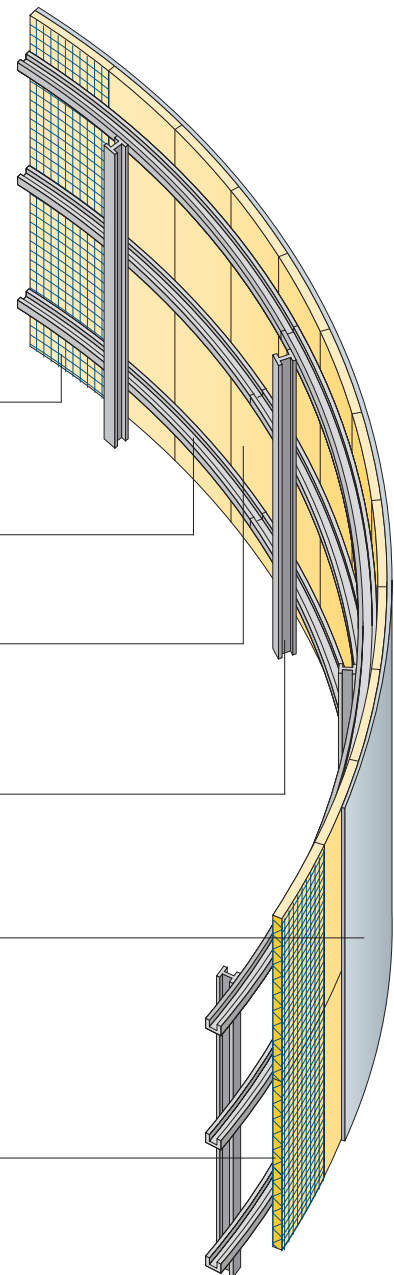
203 x 76mm sheeting rails at 2400mm centres, bent to required radius

Structherm 50 series single panel application spanning vertically with 50 x 50mm mesh, continuous at joints and clipped pneumatically with Hartco clips

203 x 133mm Universal Columns at 6000mm centres

Apply two coats of pre-bagged polymer modified render, 24-26mm thick, plus the application of a finish chosen from the Settef range of Marble Aggregates.

Structherm panels with warren trusses encapsulating insulation, such as expanded or extruded polystyrene, etc.



AREAS OF USE FOR THE THREE CLADDING PANEL APPLICATIONS

THE SYSTEM IS USED EXTENSIVELY FOR:

1. Full external re-cladding to replace defective or inefficient cladding.
2. Full external overcladding to upgrade defective but basically serviceable cladding (improving structural safety and thermal continuity).
3. Re-configuration of building facades to reduce or enlarge glazed areas (modifying solar gain, heat loss and glare).
4. Balcony and walkway enclosure (converting external space into usable internal floor area).
5. Parapet creation and extension (improving safety at roof level and altering skyline aesthetics).
6. Services enclosure (protecting services infrastructure and improving maintenance).
7. New, large area enclosures.

BUILDING SECTORS INCLUDE:

1. Housing refurbishment – low and high rise.
2. Schools, colleges and universities.
3. Office and commercial buildings.

Structherm | Structural Cladding

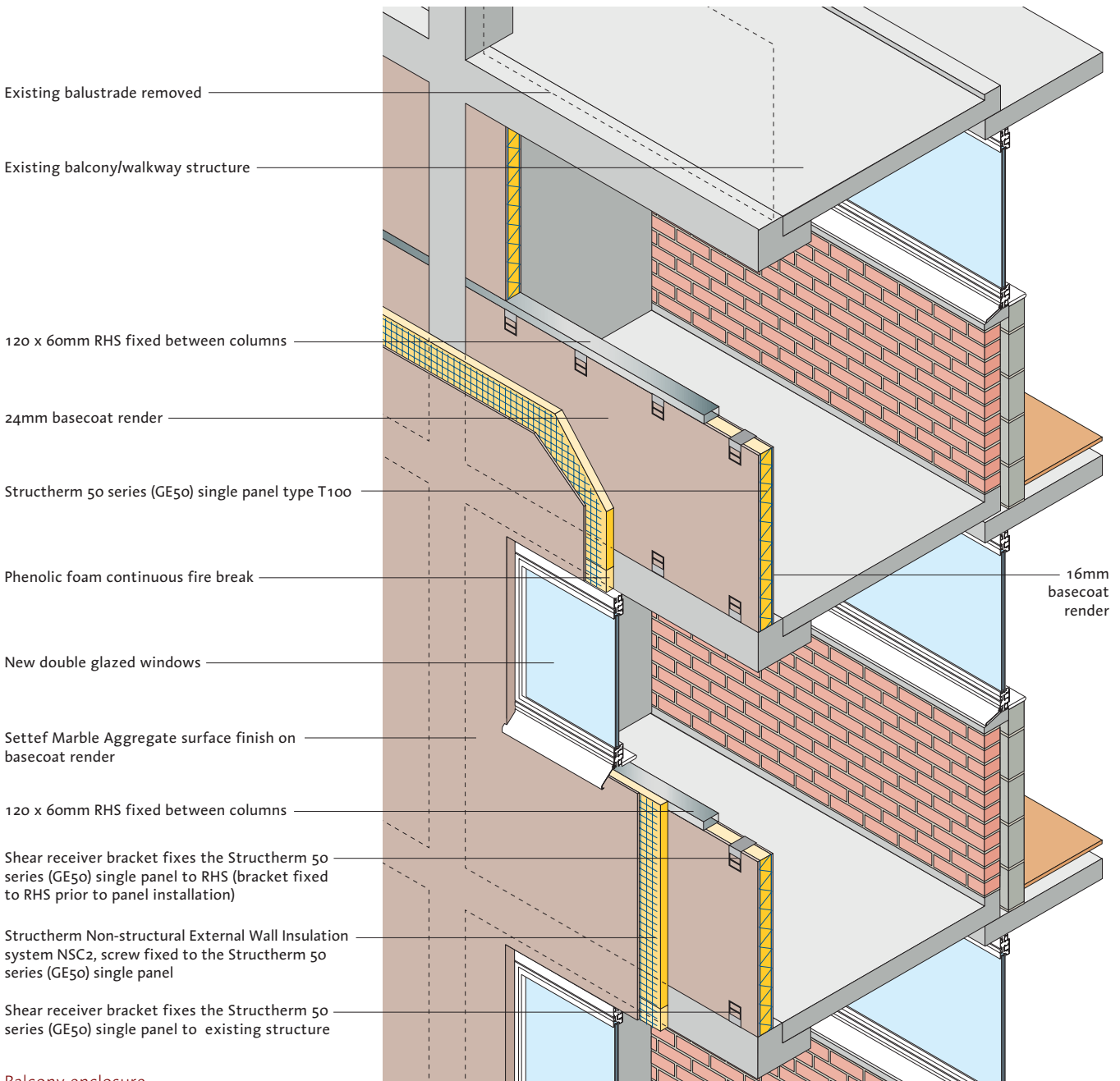
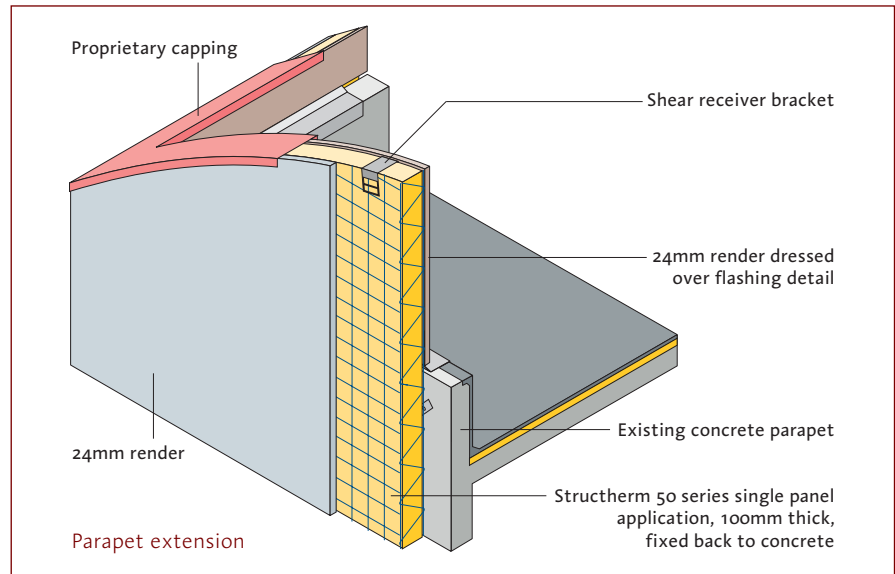
Standard Single Panel Application

Refurbishment Project

The details are based on the Fred Wigg Residential Tower, London Borough of Waltham Forest.

Key features include:

1. Re-modelling of parapet/gable to increase safety and change skyline.
2. Enclosure of balcony/walkway to increase internal floor area.



Double Panel Application

Refurbishment (Infill) Project

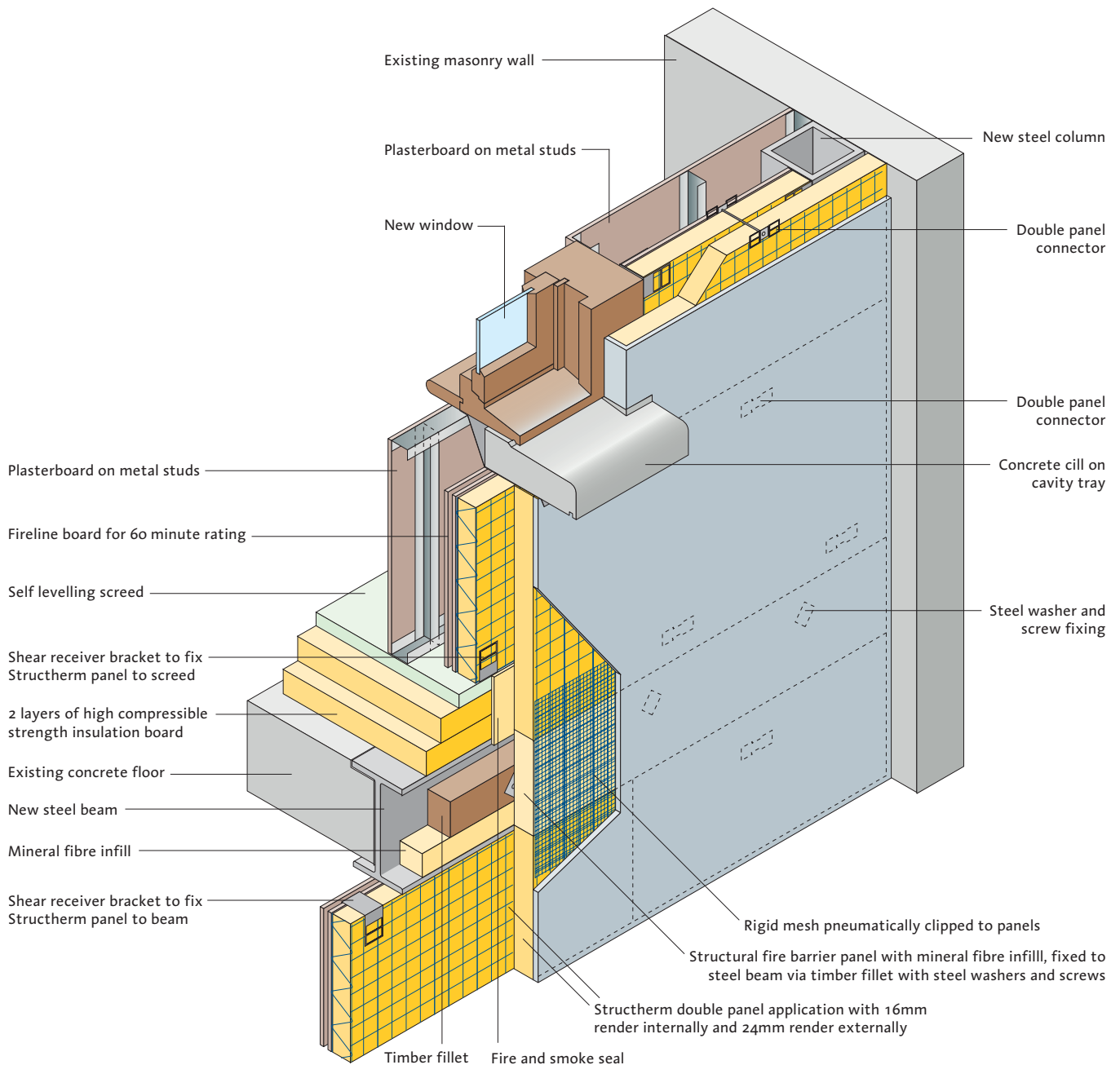
The detail is based on the Great Western Royal Hotel, Paddington.

Key features include:

1. Double panel system on lightweight steel frame.
2. Internal panels spanning vertically, external panels horizontally.
3. Incorporating heavy reconstituted stone cills and string courses.
4. Finishes match adjacent refurbished building.



Great Western Royal Hotel, Paddington



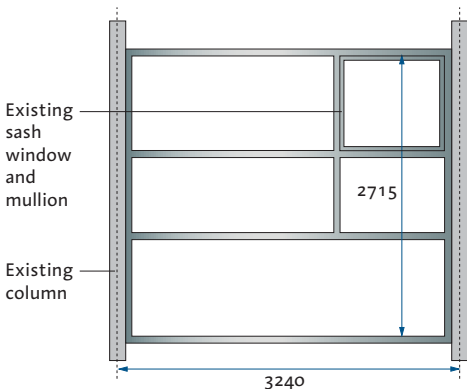
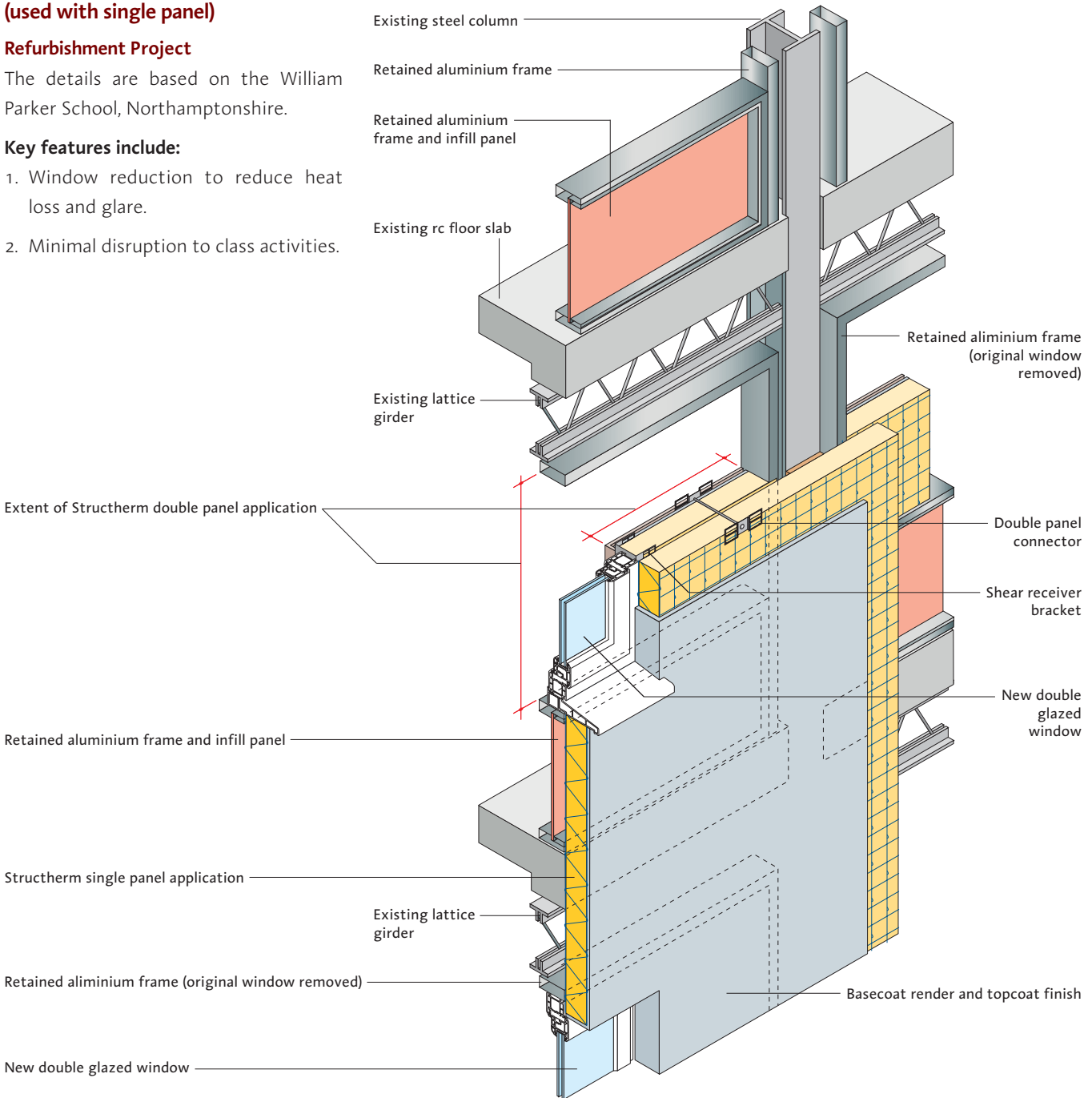
Double Panel Application (used with single panel)

Refurbishment Project

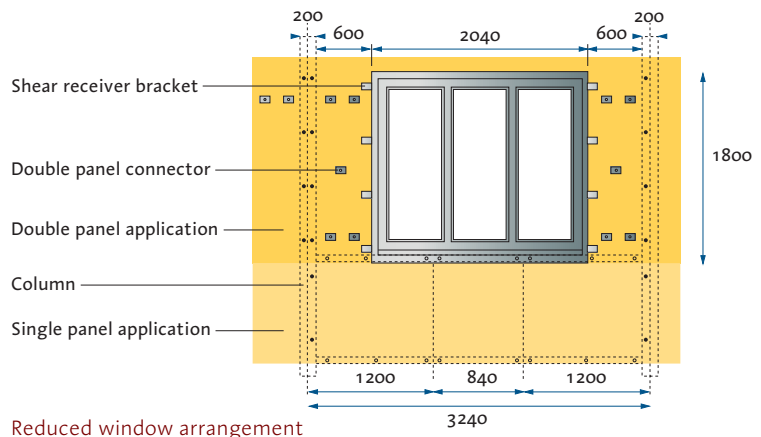
The details are based on the William Parker School, Northamptonshire.

Key features include:

1. Window reduction to reduce heat loss and glare.
2. Minimal disruption to class activities.



Existing window arrangement



Reduced window arrangement