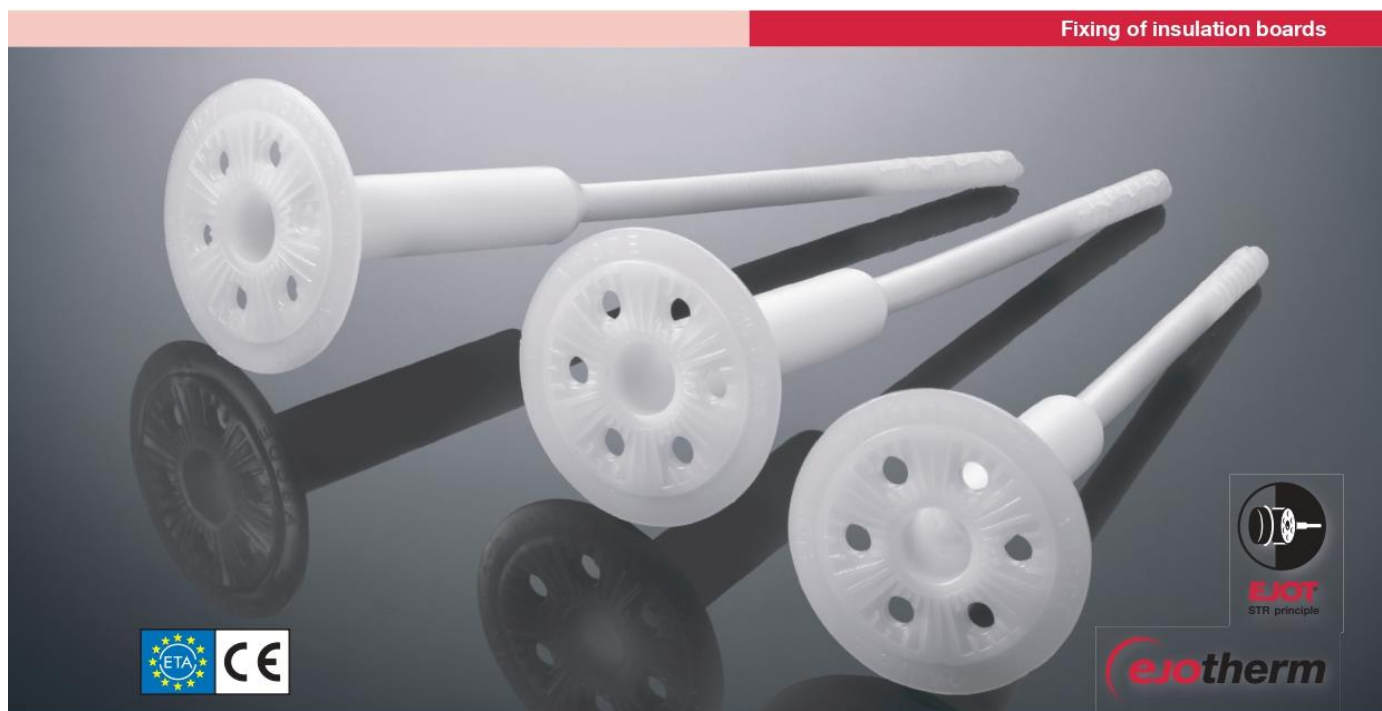


## ***ejoth*erm STR U 2G**

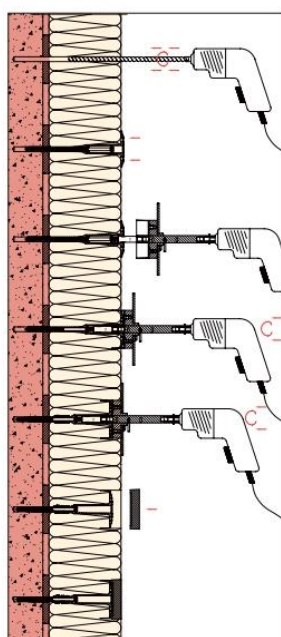
Universal screw-in anchor with European Technical Approval  
for countersunk and surface fixed installation



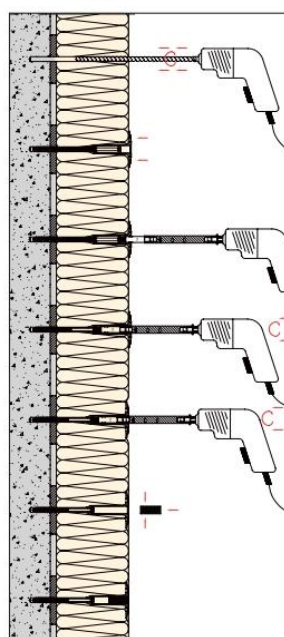
Fixing of insulation boards



### Installation



Countersunk installation acc. to EJOT STR principle with *ejoth*erm STR cap



Surface fixed installation with *ejoth*erm STR plug

### Advantages

- Approved for all categories of building material
- Countersunk installation - EJOT STR-principle with *ejoth*erm STR cap for homogeneous surfaces and even rendering - quick and easy without milling dust
- Up to 40% faster installation
- Optimised thermal bridging (0.001 W/K)
- Surface fixed installation using *ejoth*erm STR plug
- Short embedment depths, high loads for maximum safety and economic anchor usage
- Permanent contact pressure
- Premounted screw for quick installation
- 100% setting control: the countersunk installation of the washer indicates safe anchorage

**EJOT®**

## ejothem STR U 2G

Universal screw-in anchor with European Technical Approval for countersunk and surface fixed installation

### Fixing of insulation boards

#### Technical data

Screw diameter	8 mm
Washer diameter	60 mm
Drill hole depth, countersunk installation $h_1 \geq$	50 mm (90 mm)
Drill hole depth, surface fixed installation $h_2 \geq$	35 mm (75 mm)
Embedment depth $h_{gr} \geq$	25 mm (65 mm)
Screw drive	TORX T30
Point thermal transmission $\lambda$ , countersunk installation	0.001 W/K
Point thermal transmission $\lambda$ , surface fixed installation	0.002 W/K
Use categories acc. to ETA	A, B, C, D, E
European Technical Approval	ETA-04/0023

Values in parentheses: anchoring in aerated concrete (use category E)

#### Characteristic loads

A Normal weight concrete C 12/15 acc. EN 206-1	1.5 kN
A Normal weight concrete C 16/20 - C 50/60 acc. EN 206-1	1.5 kN
A Pre-cast concrete panel C16/20 - C50/60	1.5 kN
B Clay bricks (Mz) acc. DIN 105	1.5 kN
B Solid lime sandstone (KS) acc. DIN EN 106	1.5 kN
D Solid masonry of lightweight concrete (V) acc. DIN 18152	0.6 kN
C Vertically perforated clay bricks (Hz) acc. DIN 105	1.2 kN
C Vertical coring reference bricks (Hz) acc. ONÖRM B 6124	0.75 kN
C Sand-lime perforated bricks (KSL) acc. DIN EN 106	1.5 kN
C Lightweight concrete hollow blocks (HbL) acc. DIN 18151	0.6 kN
D Lightweight aggregate concrete (LAC)	0.9 kN
E Autoclaved aerated concrete P2 - P7	0,75 kN

Please note: For calculation of design loads the national safety factors have to be included (e.g. Germany: 3). Please observe the approval.

#### Accessories

A broad range of accessories is available for the **ejothem STR U 2G** product group:

#### ejothem STR-tool 2G

Specially developed tool for countersunk installation



#### ejothem STR caps and plugs



EJOT additional combi washer VT 90 and SBL 140 plus



#### Product range

Use category A-D		Use category E		Product name and length (mm)	Use category A-D		Use category E		Product name and length (mm)
Insulation (mm)	Insulation (mm)	Insulation (mm)	Insulation (mm)		Insulation (mm)	Insulation (mm)	Insulation (mm)	Insulation (mm)	
New build. <sup>1)</sup>	Renovation <sup>2)</sup>	New build. <sup>1)</sup>	Renovation <sup>2)</sup>		New build. <sup>1)</sup>	Renovation <sup>2)</sup>	New build. <sup>1)</sup>	Renovation <sup>2)</sup>	
80	60 <sup>3)</sup>	-	-	ejothem STR U 2G 115	280	260	240	220	ejothem STR U 2G 315
100	80	60 <sup>3)</sup>	-	ejothem STR U 2G 135	300	280	260	240	ejothem STR U 2G 335
120	100	80	60 <sup>3)</sup>	ejothem STR U 2G 155	320	300	280	260	ejothem STR U 2G 355
140	120	100	80	ejothem STR U 2G 175	340	320	300	280	ejothem STR U 2G 375
160	140	120	100	ejothem STR U 2G 195	360	340	320	300	ejothem STR U 2G 395
180	160	140	120	ejothem STR U 2G 215	380	360	340	320	ejothem STR U 2G 415
200	180	160	140	ejothem STR U 2G 235	400	380	360	340	ejothem STR U 2G 435
220	200	180	160	ejothem STR U 2G 255	420	400	380	360	ejothem STR U 2G 455
240	220	200	180	ejothem STR U 2G 275	<b>Product code:</b> 8719 ... 400 (for example: ejothem STR U 2G 115: 8719 115 400).				
260	240	220	200	ejothem STR U 2G 295	<b>Packaging:</b> 100 pieces				

<sup>1)</sup> 10 mm adhesive

<sup>2)</sup> 10 mm adhesive and 20 mm old render

<sup>3)</sup> to be surface fixed installation only

Please note: Always use in combination with ejothem STR cap and ejothem STR plug respectively