

## BEWI Basetherm Technical Datasheet

BEWI Basetherm is a high-performance expanded polystyrene board engineered to insulate and provide impact resistance below the damp-proof course in External Wall Insulation (EWI) applications.

Unaffected by moisture, Basetherm will maintain its mechanical properties in damp environments providing a robust solution when used in conjunction with BEWI External Wall Insulation.

### Dimensions:

Standards size : 1200mm x 1200mm  
Standard Thicknesses: 50mm or 100mm\*

### Key properties:

200 Grade – High density EPS  
Compressive strength – 200kPa @10% strain  
Tensile Strength – minimum 100kPa  
Flatness – 3mm  
Reaction to fire – Class E

### Performance:

Compressive strength at 10% deformation (kPa) BS EN 13163  
Tensile Strength BS EN 1607  
Fire Classification BS EN 13501-1

### Thermal Resistance (R-Values):

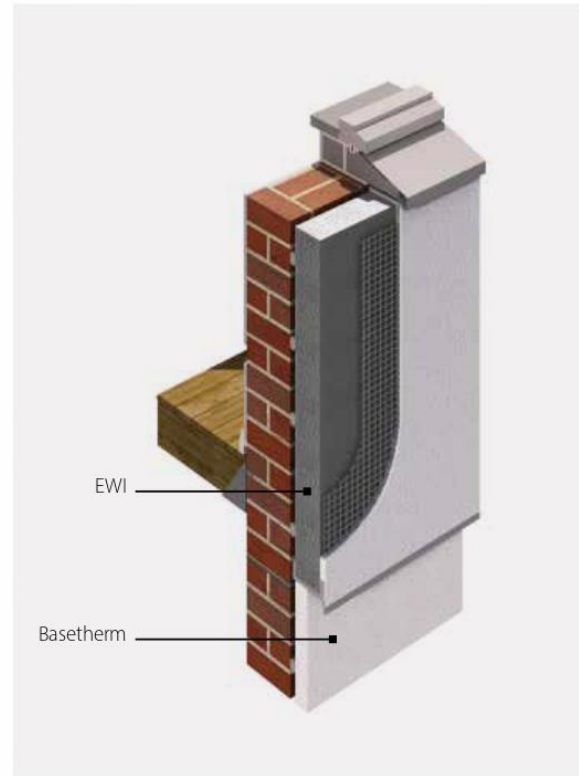
Standard Board Thicknesses*	EPS 200E white (thermal conductivity of 0.034 W/mK)
50mm	1.45m <sup>2</sup> /K/W
100mm	2.90m <sup>2</sup> /K/W

\* other sizes are available to order

### Standards:

BEWI products are produced to the requirements of the BS EN 13163 Thermal Insulation Products for Buildings – Factory Made Products of Expanded polystyrene (EPS) specification.

BEWI has been assessed and approved to the BS EN ISO 9001 Quality System for quality assurance in production, installation and servicing.



### Water vapour transmission:

BEWI EWI offers significant resistance to the passage of water vapour, but should not be regarded as a vapour-control layer.

Condensation calculations covering typical environmental conditions show that the dew point of an external-wall insulation system will occur on the external face of the insulation. This is the ideal situation.

### Fire:

Any necessary fire performance should be provided by the facing material and the system design.

Refer to the national Building Regulations for types of buildings and any product restrictions / exclusions that may apply prior to use and or inclusion in any specification.

Disclaimer: Every effort has been made to ensure the correctness of the information provided in this data sheet and is based on data and knowledge accurate at the time of production. It is designed for experienced professionals in the building and construction industry and does not offer a complete overview of industry practices. Therefore, this cannot guarantee the performance results, as usage and installation conditions are outside our control. If you have any questions regarding the suitability of the application, please contact us.

For more information:

bewi.com e-mail: sales.insulation.uk@bewi.com Tel: 0870 600 3666

© BEWI TDS-04W-BTI-V05 NOV 2024

# BEWI